

PORT

COMMERCIAL PROPERTIES

1896m² Office To Let

11 Adderley Street, Cape Town City Centre

Gross rental

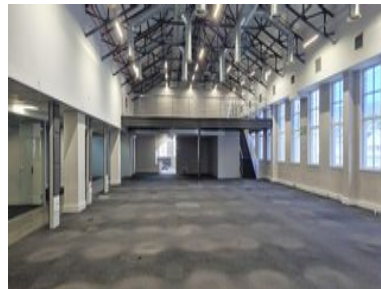
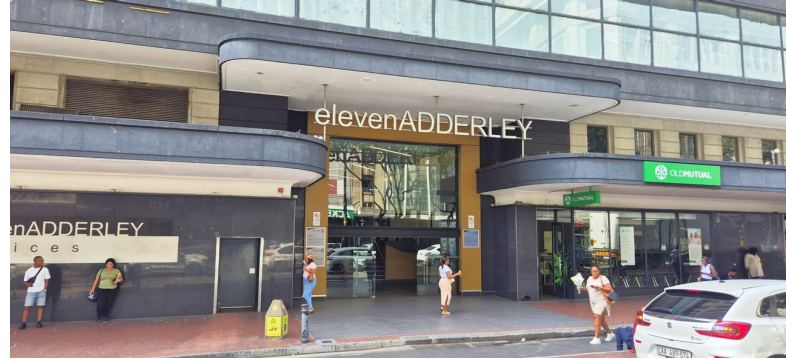
R312840 excl. VAT

This spacious 8th-floor office at 11 Adderley Street offers 1,896sqm of premium space at R165/sqm excl. VAT. The layout includes a welcoming reception area, a mix of private offices and boardrooms, open-plan workspace with an A-frame loft feature, ample ablutions, kitchen facilities, and storage rooms. Tenants benefit from 24-hour security, excellent views of Table Mountain and the city, and easy access to restaurants and coffee shops located on the ground floor. Parking bays are available, and a generous tenant installation allowance is on offer to customise the space to your needs.

11 Adderley is a landmark building in the Cape Town CBD/Foreshore precinct, recently redeveloped with modern lifts, central air conditioning, and elegant communal areas. The building offers full backup power, high-level access control, and a bright internal atrium with unique architectural touches. Positioned next to Golden Acre and major public...

Rate Per m² excl. VAT	R165 / m²
Floor Size	1896m²
Availability	Immediately

Security	Yes
Air Conditioning	Yes
Type	Office
Title	None
Zoning	Commercial



CONTACT US

Daniel Bernberg



(021) 204 7218



0827829840



daniel@portcommercial.com



Buitengracht Centre
125 Buitengracht Street
Cape Town



Disclaimer: Whilst every effort has been made to ensure the accuracy of the information contained herein, no liability can be accepted for any errors or omissions and the Tenant or Buyer is advised to verify the facts prior to making any offer to lease or purchase.

