



# PORT

COMMERCIAL PROPERTIES

## 163m<sup>2</sup> Office To Let

32 Somerset Road, Green Point

Gross rental

R29340 excl. VAT

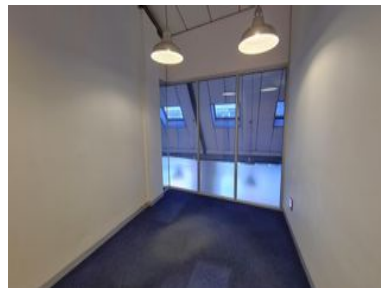
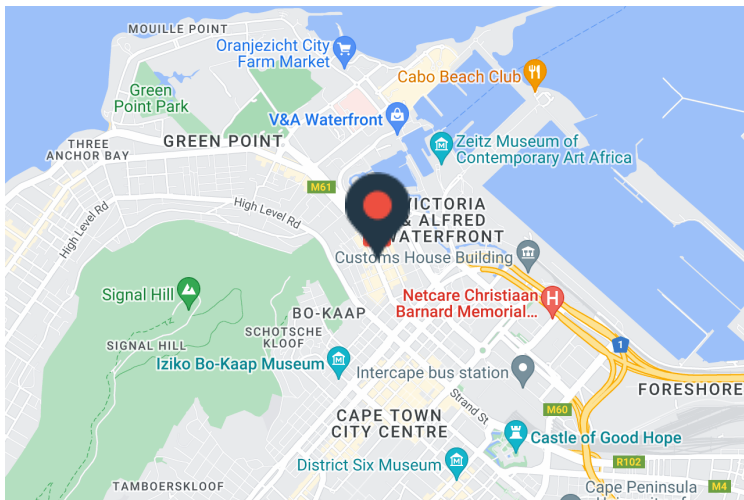
Superbly finished bright open-plan office space with tall windows and great natural light!

FEATURES: Executive mezzanine level with private offices;  
Kitchenette; Spacious and bright open plan workspaces

Situated on busy Somerset Road, Sovereign Quays is an exceptional building right in the heart of Green Point, and walking distance from De Waterkant and the prestigious Cape Quarter, taking advantage of all of the fine amenities the suburb has to offer including fine dining, high end retail, and a range of public transport. (Basement parking available at R1600-00/Bay)

Rate Per m <sup>2</sup> excl. VAT	R180 / m <sup>2</sup>
Floor Size	163m <sup>2</sup>
Availability	Immediately

Security	Yes
Air Conditioning	Yes
Type	Office
Title	None
Zoning	Commercial



## CONTACT US



**Daniel Bernberg**



(021) 204 7218



0827829840



daniel@portcommercial.com



Buitengracht Centre  
125 Buitengracht Street  
Cape Town

Disclaimer: Whilst every effort has been made to ensure the accuracy of the information contained herein, no liability can be accepted for any errors or omissions and the Tenant or Buyer is advised to verify the facts prior to making any offer to lease or purchase.