



PORT

COMMERCIAL PROPERTIES

360m² Office To Let

264 Victoria Road, Woodstock

Gross rental

R23400 excl. VAT

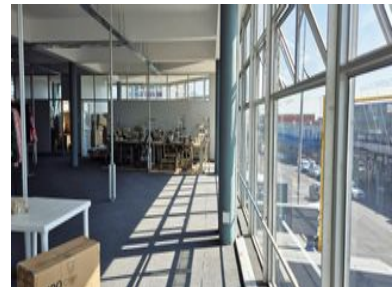
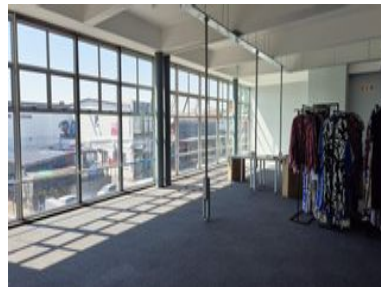
This spacious 2nd floor office has ceiling-high windows and great light! Superb Value!

Secure parking available. R1200/bay Excl. VAT

264 Victoria is a centrally located building, situated in the heart of Woodstock, and near to a range of public transport. The building is home to both ABSA and Nedbank, offering convenience and additional security.

Rate Per m ² excl. VAT	R65 / m ²
Floor Size	360m ²
Availability	Immediately

Security	No
Air Conditioning	No
Type	Office
Title	None
Zoning	Commercial



CONTACT US

Daniel Bernberg



(021) 204 7218



0827829840



daniel@portcommercial.com



Buitengracht Centre
125 Buitengracht Street
Cape Town



Disclaimer: Whilst every effort has been made to ensure the accuracy of the information contained herein, no liability can be accepted for any errors or omissions and the Tenant or Buyer is advised to verify the facts prior to making any offer to lease or purchase.

