



PORT

COMMERCIAL PROPERTIES

75m² Office To Let

19 Edison Way, Century City

Gross rental

R13990 excl. VAT

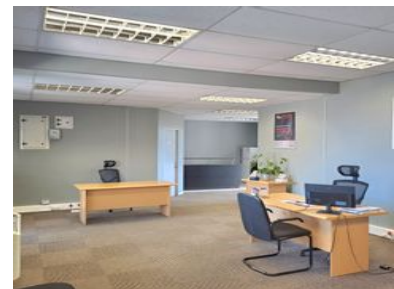
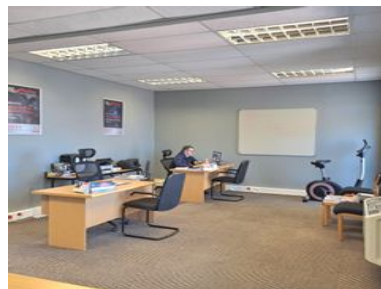
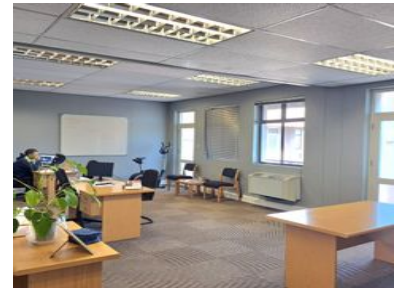
This Modern office is available from 1 September in the popular Millennium Business Park, Century City. The space features an open-plan layout with a modern kitchen, bathroom and a private balcony overlooking Tygerberg Hill. Carpeted throughout with tiled kitchen and bathroom areas, it offers a clean, professional finish ideal for a collaborative and client-facing environment.

Millennium Business Park is a secure, access-controlled office park with 24-hour security. the rental includes 3 parking bays (namely 1 basement, 1 covered & 1 open) and offers easy access to major highways and public transport routes. Situated within walking a couple of mins drive to Canal Walk, as well as nearby restaurants and coffee shops, it's a convenient and vibrant location for any growing business.

Contact Daniel Etherington from Port Commercial for any queries or viewing arrangements at a convenient time.

Rate Per m ² excl. VAT	R185 / m ²
Floor Size	75m ²
Availability	01 Oct 25
Undercover Parkings	1
Open Parkings	R450 (1)
Shaded Parkings	R650 (1)

Security	Yes
Air Conditioning	Yes
Type	Office
Title	None
Zoning	Commercial



CONTACT US



Daniel Etherington



(021) 204 7218



0727090057



daniel.e@portcommercial.com



Buitengracht Centre
125 Buitengracht Street
Cape Town

Disclaimer: Whilst every effort has been made to ensure the accuracy of the information contained herein, no liability can be accepted for any errors or omissions and the Tenant or Buyer is advised to verify the facts prior to making any offer to lease or purchase.