

108m² Office To Let

13 Bosmansdam Road, Milnerton Central

Gross rental

R11500 excl. VAT

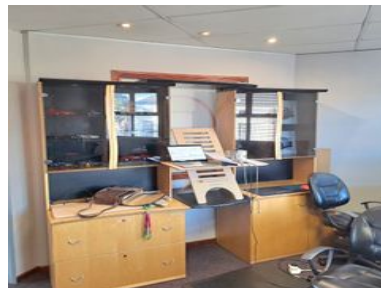
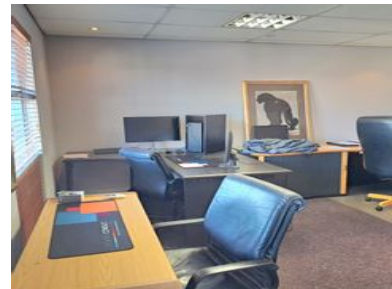
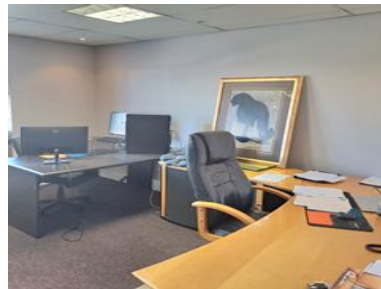
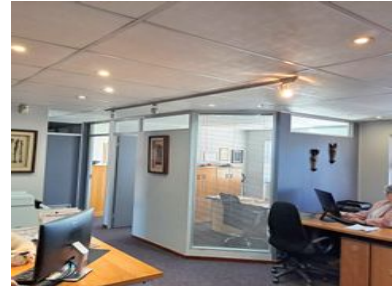
A well-maintained 108sqm first-floor office will be available for lease from 1 September 2025. The space includes a reception area, large boardroom, two private offices, a storage room, two toilets, and a kitchenette. It comes with single-phase power and is ideally suited for consulting, tech, accounting, or security businesses. The unit includes four dedicated parking bays (2 shade net, 2 open), with visitor parking available. A backup generator ensures uninterrupted power supply.

Located in Centurion Business Park on Bosmansdam Road, this secure and professionally managed complex is on the edge of Century City, with excellent access to major roads and public transport. The park is access-controlled with 24/7 security and is home to quiet, professional tenants, providing a clean and peaceful working environment.

Contact Daniel Etherington from Port Commercial for any queries or viewing arrangements.

Rate Per m ² excl. VAT	R106 / m ²
Floor Size	108m ²
Availability	Negotiable
Open Parkings	4

Security	Yes
Air Conditioning	Yes
Type	Office
Title	None
Zoning	Commercial



CONTACT US



Daniel Etherington

 (021) 204 7218
 0727090057
 daniel.e@portcommercial.com
 Buitengracht Centre
125 Buitengracht Street
Cape Town

Disclaimer: Whilst every effort has been made to ensure the accuracy of the information contained herein, no liability can be accepted for any errors or omissions and the Tenant or Buyer is advised to verify the facts prior to making any offer to lease or purchase.