



PORT

COMMERCIAL PROPERTIES

522m² Warehouse To Let

6 Tranquil Flow st, Riverside Park

Gross rental

R46980 excl. VAT

Size: 522 square meters

Ground Floor: 370 square meters

Mezzanine/Upper Level: 152 square meters

Availability: Immediate

Type: Industrial Warehouse

Property Overview:

Located in the well-established Riverside Industrial Park in Nelspruit, this functional and well-positioned warehouse offers a mix of ground floor operational space and upper-level storage or office potential.

Key Features:

370 sqm open-plan ground floor with high clearance

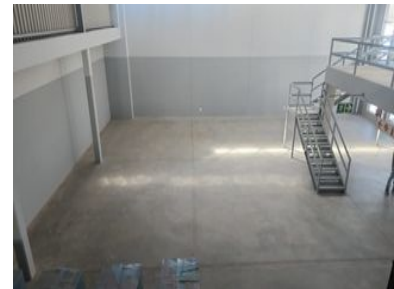
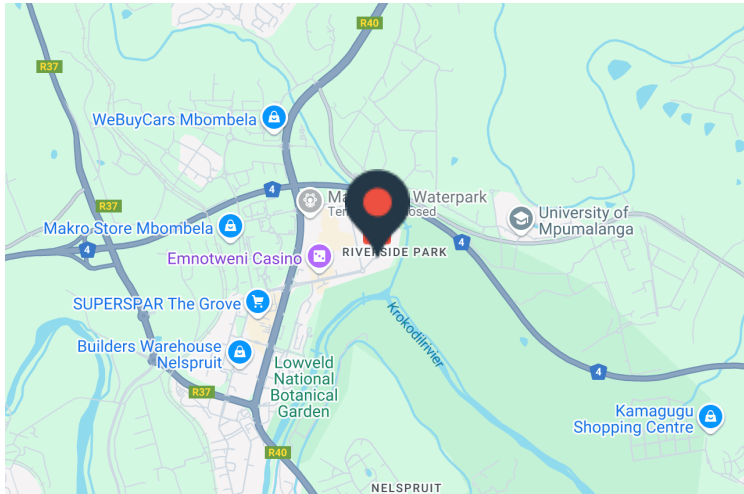
Rate Per m ² excl. VAT	R90 / m ²
Floor Size	522m ²
Availability	Immediately

Secure premises in a popular industrial park

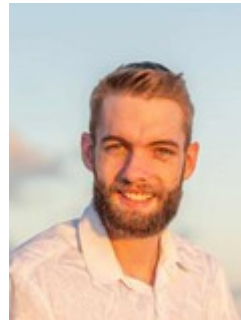
Convenient access to major roads and distribution routes

Security	No
Air Conditioning	No
Type	Warehouse
Title	None
Zoning	Commercial

Contact Nickey Visagie for more details or to book a viewing.



CONTACT US



Nick Visagie

(021) 204 7218
 0749463035
 nick@portcommercial.com
 Buitengracht Centre
125 Buitengracht Street
Cape Town

Disclaimer: Whilst every effort has been made to ensure the accuracy of the information contained herein, no liability can be accepted for any errors or omissions and the Tenant or Buyer is advised to verify the facts prior to making any offer to lease or purchase.