



PORT

COMMERCIAL PROPERTIES

850m² Building For Sale

38 Bromwell Street, Woodstock

Price

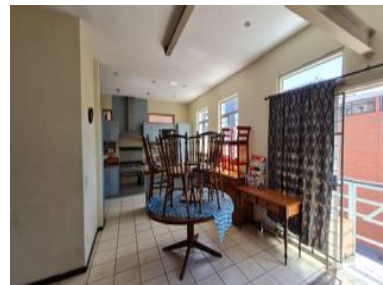
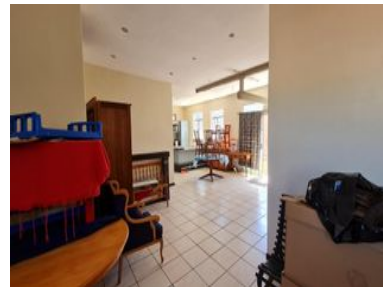
R6,200,000 excl. VAT

Looking for an investment property with plenty of potential in Woodstock? This mixed-use property on Bromwell Street features two separate buildings on one erf and is fully tenanted, generating income from two residential tenants and a printing studio. Zoned for both commercial and residential use, this property offers versatility and the opportunity to increase the area under roof by roughly two times with an attendant 2-story increase in height, subject to town planning provisions. This property is an ideal opportunity for investors looking to secure a steady income stream in a prime location. Located just behind Woodstock Main Road and near the Old Biscuit Mill, this property is conveniently situated to access major transport links, including the N1, and N2 via Roodebloem Road. VAT applicable sale.

Building 1 features a roughly 6-car garage or workshop space on the ground floor with a roller shutter door, currently...

Floor Size	850m ²
Availability	None

Security	No
Air Conditioning	No
Type	Building
Title	Freehold
Zoning	Mixed Use



CONTACT US



Neil Bernberg

 (021) 204 7218
 084 221 0282
 neil@portcommercial.com
 Buitengracht Centre
 125 Buitengracht Street
 Cape Town

Disclaimer: Whilst every effort has been made to ensure the accuracy of the information contained herein, no liability can be accepted for any errors or omissions and the Tenant or Buyer is advised to verify the facts prior to making any offer to lease or purchase.

